

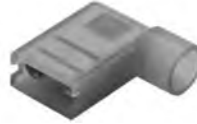
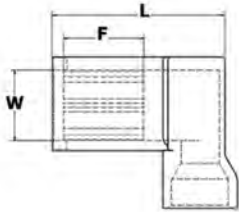
TYPE ILSCONS

Features

- Configuration of a right angel female disconnect
- Barrel allow for two crimps
- Funnel wire entry
- Nylon insulation
- Color coded
- Manufactured from high strength brass alloy
- Electro-tin plated
- Brazed barrel
- UL Listed for 600 volts, 105° C

Benefits

- Allows for multiple configurations where space is limited or when a conductor is square to the connector
- Stronger crimp connection that will not split open, prevents wire pull out
- Smooth wire insertion into barrel
- Increased heat and chemical resistant qualities for more demanding applications
- Provide easy wire range identification
 - #18-22 AWG Red
 - #14-16 AWG Blue
 - #10-12 AWG Yellow
- Offers maximum conductivity
- Provides low contact resistance
- Provides strain relief, prevents exposure of wire conductors
- Ensures reliability for copper conductor



Catalog Number	Wire Range	Dimensions - in. (mm)						Installation Tooling ILST-22K	Package Quantity
		L		W		F			
NFLB- Nylon-Insulated									
NFLB-18-250-P25	18-22	0.598	(15.19)	0.260	(6.60)	0.299	(7.59)	Die Set A	25
NFLB-14-250-P25	14-16	0.598	(15.19)	0.260	(6.60)	0.299	(7.59)	Die Set A	25
NFLB-10-250-P25	10-12	0.650	(16.51)	0.260	(6.60)	0.299	(7.59)	Die Set A	25
NFLBD- Nylon-Insulated- Double Crimp									
NFLBD-18-187-P25	18-22	0.748	(19.00)	0.197	(5.00)	0.244	(6.20)	Die Set A	25
NFLBD-18-250-P25	18-22	0.819	(20.80)	0.260	(6.60)	0.295	(7.49)	Die Set A	25
NFLBD-14-187-P25	14-16	0.748	(19.00)	0.197	(5.00)	0.244	(6.20)	Die Set A	25
NFLBD-14-250-P25	14-16	0.819	(20.80)	0.260	(6.60)	0.295	(7.49)	Die Set A	25
NFLBD-10-250-P20	10-12	0.906	(23.01)	0.260	(6.60)	0.295	(7.49)	-	

All wire sizes, unless noted otherwise, are American Wire Gauge (AWG)
Tested to UL 310, UL File E474613